

FOR LEASE | HIGHLANDS OVERLOOK 1500 WILSON WAY



Highlands Overlook
offers a great
environment ideal for
Home Depot
Innovation Center
vendors and other
showroom users.

246,000 SF
Office and Industrial Park
Smyrna, GA

For information, contact:

Jimmy Stevens
770.913.3983
jstevens@ackermanco.net

David Ellis
770.913.3926
dellis@ackermanco.net

Ackerman & Co.
10 Glenlake Parkway
South Tower, Suite 1000
Atlanta, GA 303028
770.913.3900

www.ackermanco.net

Ackerman & Co.

Brokerage | Development | Management | Investment

9,600 SF Available

1500 Wilson Way | Suite 250
Smyrna, GA

PROJECT SPECIFICS

| | |
|------------------------|----------|
| Available Square Feet: | 9,600 SF |
| Office Size: | 883 SF |
| Warehouse Size: | 8,717 SF |
| Dock doors: | 4 |
| Sprinkler: | Yes |
| Clear Height: | 18' |

LOCATIONAL BENEFITS

- Less than 1 mile to the Home Depot Innovation Center
- Immediate access to I-285 and East West Connector
- 5 Minutes to I-75/85
- 15 Minutes to Hartsfield Jackson International Airport
- Close to restaurants and other retail amenities

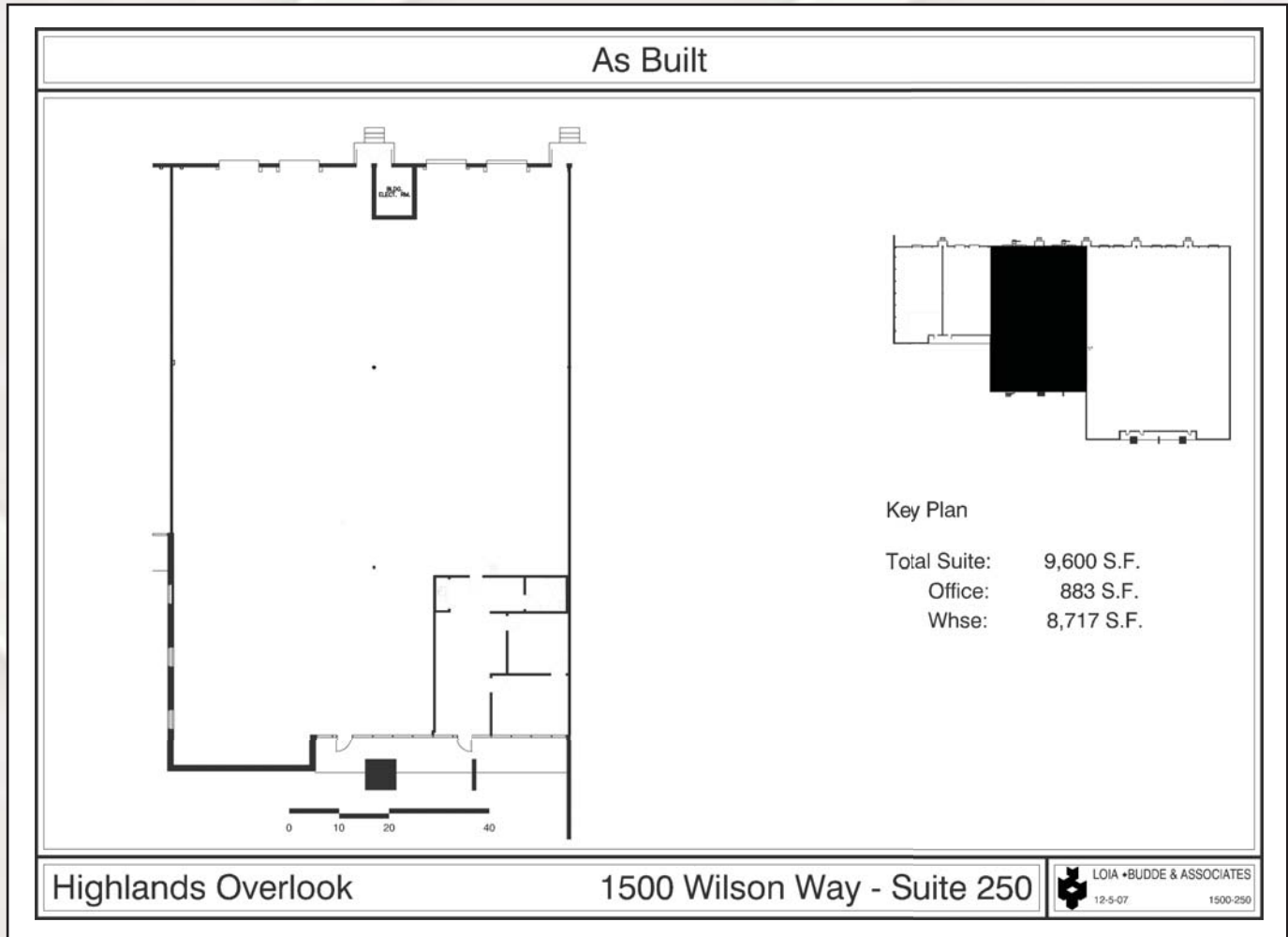


FOR LEASE | HIGHLANDS OVERLOOK 1500 WILSON WAY

9,600 SF Available

1500 Wilson Way | Suite 250

Smyrna, GA



For information, contact:

Jimmy Stevens
770.913.3983
jstevens@ackermanco.net

David Ellis
770.913.3926
dellis@ackermanco.net

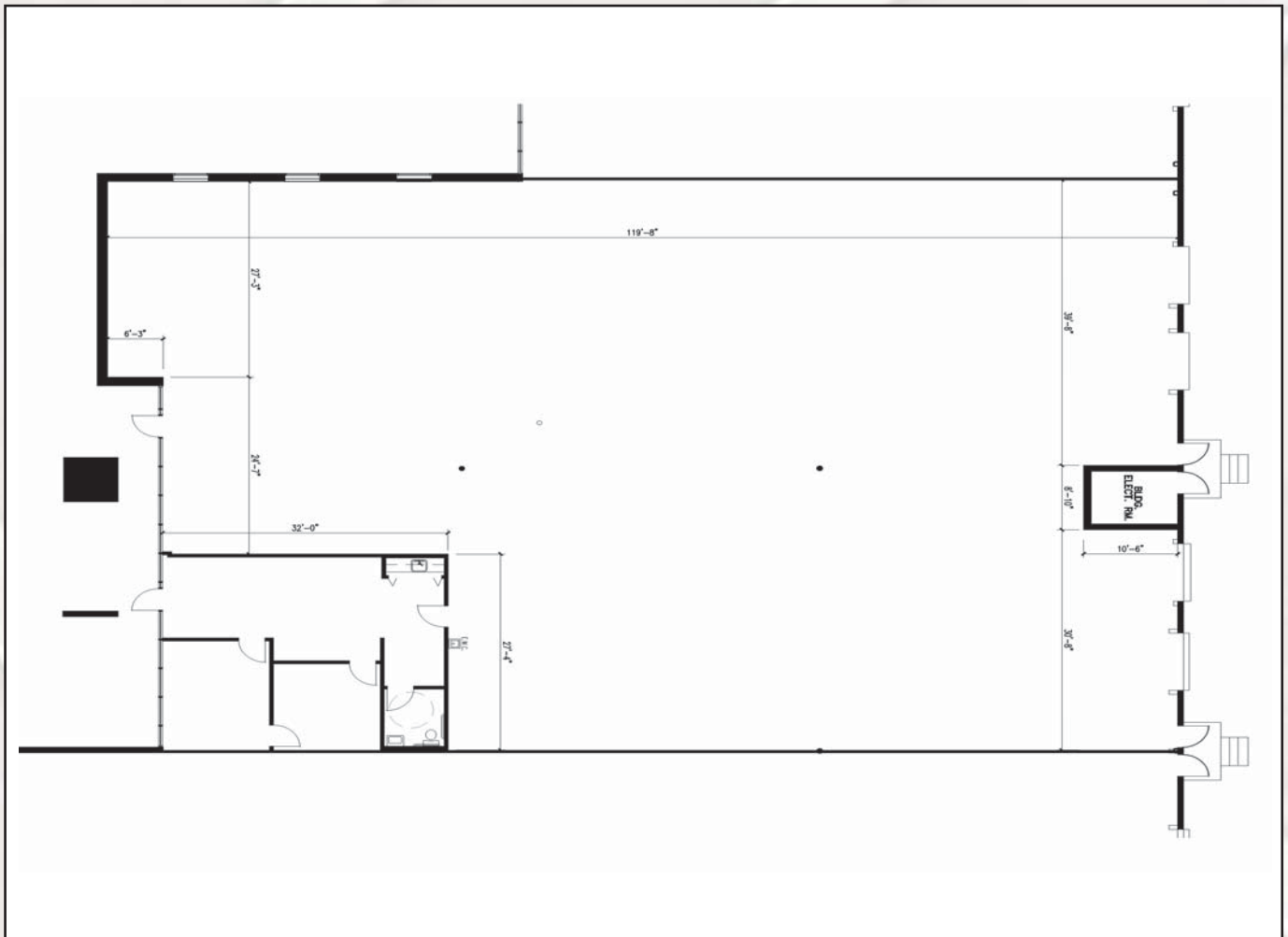
Ackerman & Co.
Brokerage | Development | Management | Investment

FOR LEASE | HIGHLANDS OVERLOOK 1500 WILSON WAY

Warehouse Dimensions | 9,600 SF Available

1500 Wilson Way | Suite 250

Smyrna, GA



For information, contact:

Jimmy Stevens

770.913.3983

jstevens@ackermanco.net

David Ellis

770.913.3926

dellis@ackermanco.net

Ackerman & Co.

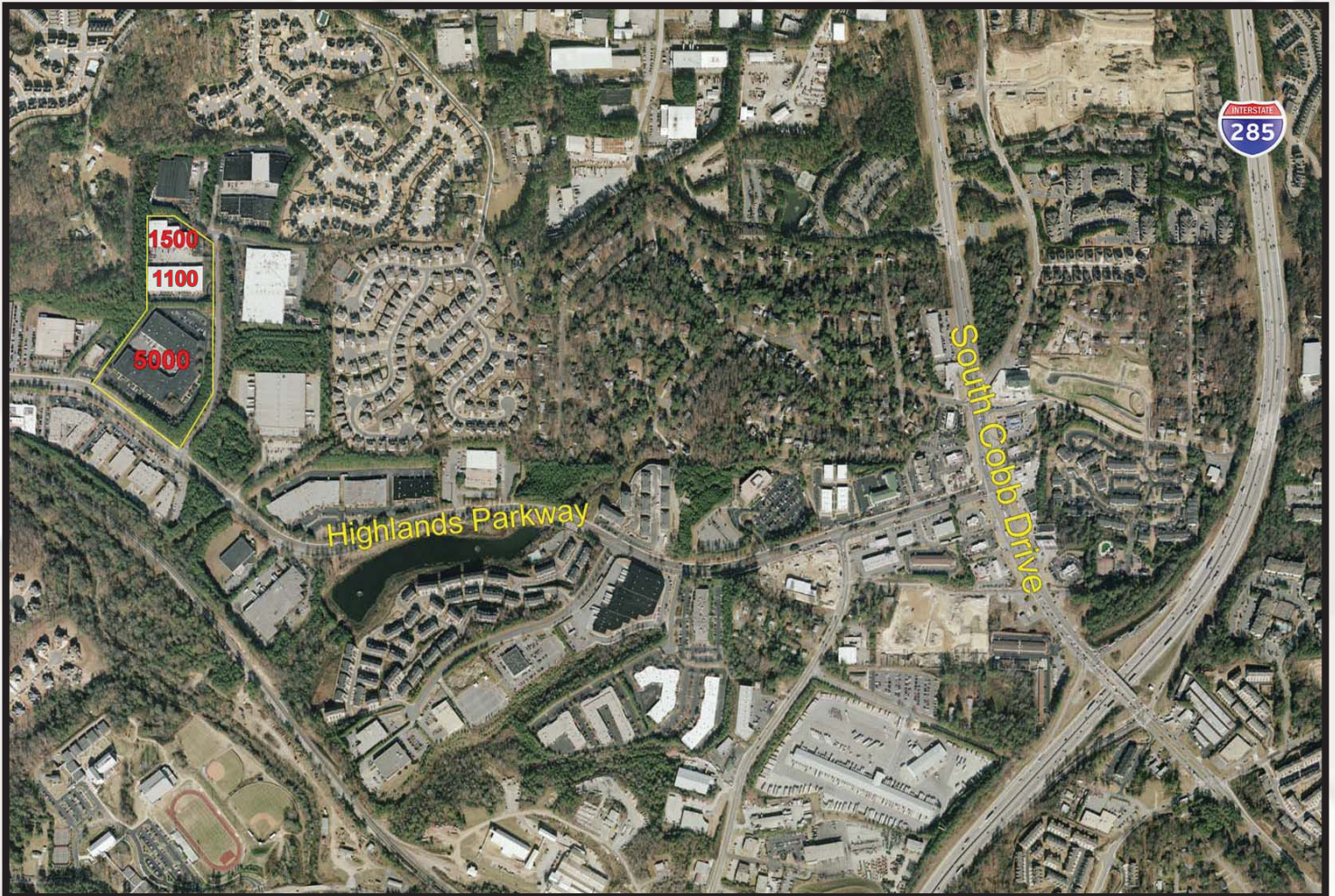
Brokerage | Development | Management | Investment

FOR LEASE | HIGHLANDS OVERLOOK 1500 WILSON WAY

9,600 SF Available

1500 Wilson Way | Suite 250

Smyrna, GA



For information, contact:

Jimmy Stevens

770.913.3983

jstevens@ackermanco.net

David Ellis

770.913.3926

dellis@ackermanco.net

Ackerman & Co.

Brokerage | Development | Management | Investment