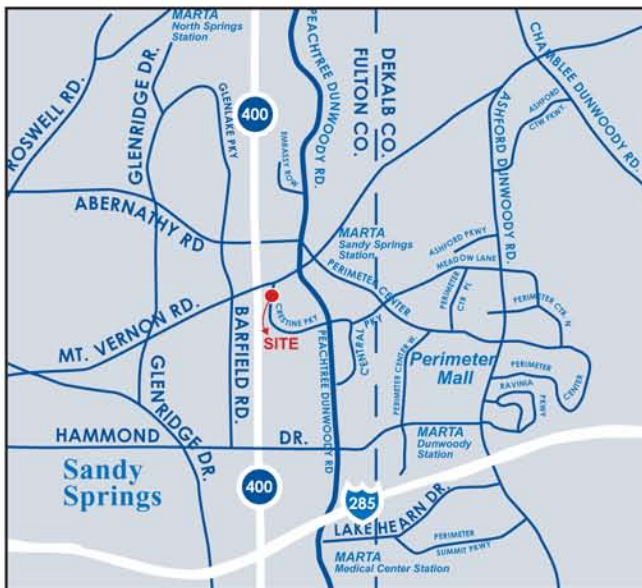


915 Crestline Parkway

Land
For Sale

Sandy Springs, GA 30328
(Fulton County)



Land Available: 1.3 acres

Project Highlights:

- Zoned OI-C
- Up to 130 hotel rooms over two levels of parking
- All utilities available
- Centrally located in Atlanta's largest office submarket
- Adjacent to Hyatt Place hotel and part of "Hotel Row"
- Easy access to GA-400
- Convenient to restaurants, retail and 3 major hospitals

Ackerman & Co.

For more information, please contact:

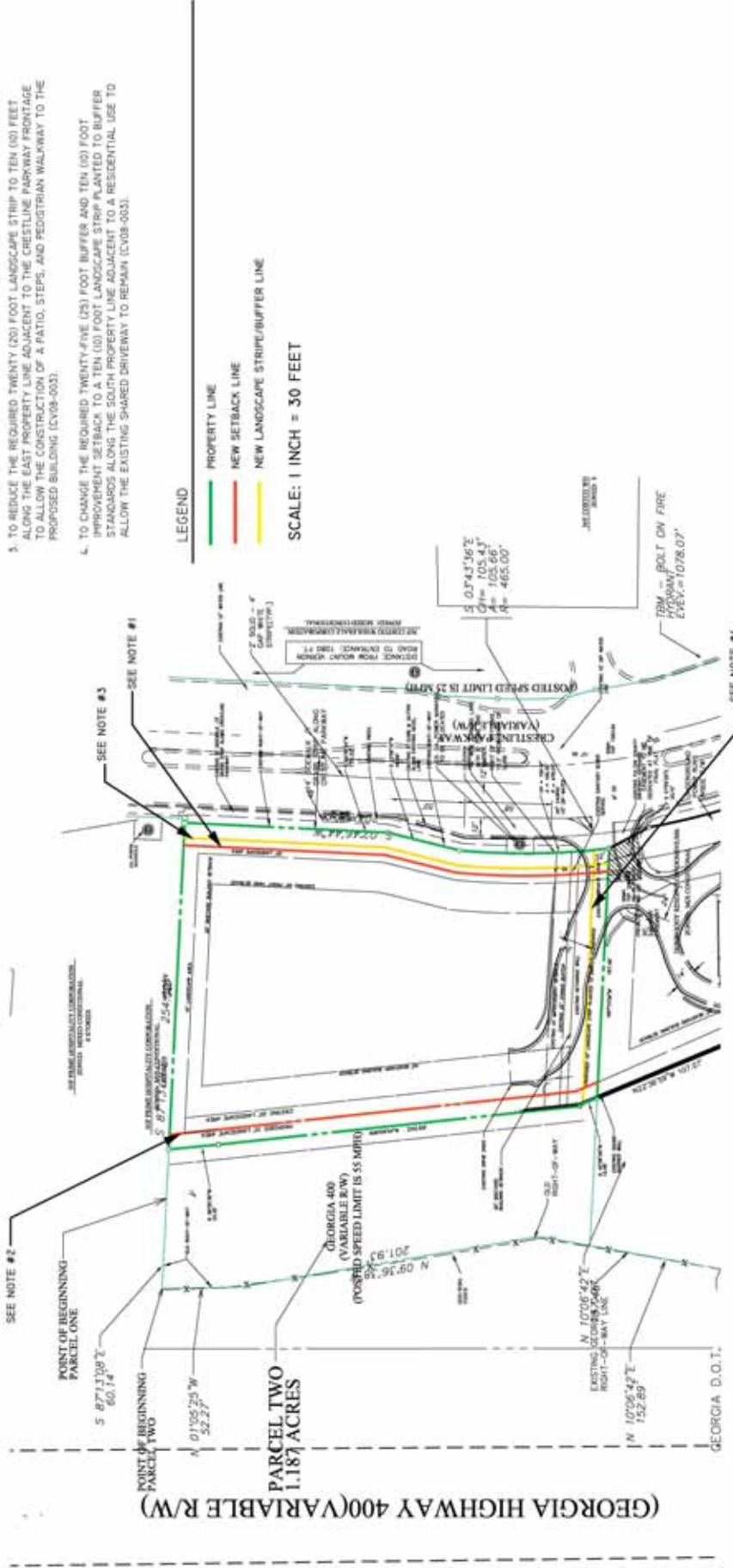
Kevin Hermetz

770-913-3942

khermetz@ackermanco.net

NOTES: CITY OF SANDY SPRINGS REZONING SITE DEVELOPMENT STANDARDS

1. TO REDUCE THE REQUIRED FRONT YARD SETBACK FROM FORTY (40) FEET TO FIFTEEN (15) FEET ALONG THE CRESTLINE PARKWAY FRONTAGE OF THE PROPERTY TO ALLOW CONFORMITY WITH THE PERMETER COMMUNITY IMPROVEMENT DESIGN DISTRICT STANDARDS (CV08-003).
2. TO REDUCE THE REQUIRED TWENTY (20) FOOT LANDSCAPE STRIP TO TEN (10) FEET ALONG THE WEST PROPERTY LINE ADJACENT TO THE GA-400 FRONTAGE TO ALLOW THE CONSTRUCTION OF AN UNDERGROUND PARKING DECK (CV08-003).
3. TO REDUCE THE REQUIRED TWENTY (20) FOOT LANDSCAPE STRIP TO TEN (10) FEET ALONG THE EAST PROPERTY LINE ADJACENT TO THE CRESTLINE PARKWAY FRONTAGE TO ALLOW THE CONSTRUCTION OF A PATIO, STEPS, AND PEDESTRIAN WALKWAY TO THE PROPOSED BUILDING (CV08-003).
4. TO CHANGE THE REQUIRED TWENTY-FIVE (25) FOOT BUFFER AND TEN (10) FOOT IMPROVEMENT SETBACK TO A TEN (10) FOOT LANDSCAPE STRIP PLANTED TO BUFFER STANDARDS ALONG THE SOUTH PROPERTY LINE ADJACENT TO A RESIDENTIAL USE TO ALLOW THE EXISTING SHARED DRIVEWAY TO REMAIN (CV08-003).



APRIL 16, 2008 APPROVAL OF REZONING - RZ08-006/CV08-003/U08-002 915 CRESTLINE PARKWAY
 CITY OF SANDY SPRINGS
 REZONING EXHIBIT A
 DATE: AUGUST 28, 2008
 BY: TLH

Ackerman & Co.

Ackerman & Co.

915 Crestline Parkway

Land Available: 1.3 acres